



## Mission Statement

*To preserve and promote the local military installations, ranges and missions and their positive economic contributions to the tri-county area.*

## DSI Objectives

- ★ *Advocate for military installations, ranges and missions*
- ★ *Defend the Gulf Test and Training Range*
- ★ *Promote joint services and systems*
- ★ *Foster enhanced military-community partnerships*
- ★ *Monitor local, state and federal impacts*

*Engaging  
for a Stronger Tomorrow*



### DSI Committee Members

Tri-County Military Affairs Committees  
Retired Military Personnel  
Defense Contractors  
Tri-County Commissioners  
Eglin Complex Ex Officio  
One Okaloosa EDC Management

### Sponsored by

The Economic Development Council  
of Okaloosa County, Florida  
DBA One Okaloosa EDC  
850-362-6467  
800-995-7374  
info@oneokaloosa.org



Printing by



[www.oneokaloosa.org](http://www.oneokaloosa.org)



*Defense  
Support  
Initiatives*

Santa Rosa • Okaloosa • Walton Counties



The Economic Development Council of Okaloosa County (EDC) originated the Defense Support Initiatives Committee in 1996 to focus on supporting and maintaining the Eglin Test and Training Complex and existing missions. The DSI representation expanded in 2003 to include Santa Rosa and Walton Counties with the objective of promoting the military's value and contributions to the region's economic vitality. One Okaloosa EDC, through its Defense Support Initiatives Committee, is recognized by the State of Florida as the official representative and lead agency in the Okaloosa County area for base-community initiatives.



## Eglin Air Force Base



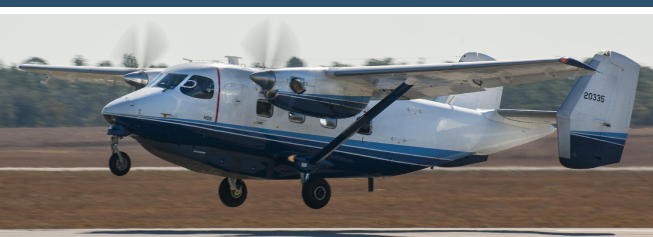
Eglin Air Force Base is a joint service installation supporting Air Force, Army and Navy test and training units, and hosts major organizations for numerous development programs, operational units, military schools and various Federal agencies. The 96th Test Wing, Eglin's host wing, is the test and evaluation center for Air Force air-delivered weapons, navigation and guidance systems, Command and Control systems, and Air Force Special Operations Command Systems.

## Hurlburt Field



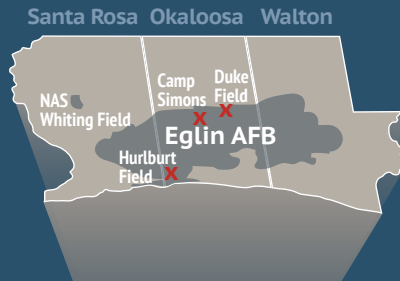
Hurlburt Field, Auxiliary Field 9, is headquarters for Air Force Special Operations Command. The command's special operations forces (SOF) are highly trained, rapidly deployable Airmen, conducting global special operations missions ranging from precision application of firepower to infiltration, exfiltration, resupply and refueling of SOF operational elements.

## Duke Field



Duke Field, Auxiliary Field 3, is home to the 919th Special Operations Wing (SOW), the only special operations unit in the Air Force Reserve. The 919th SOW reports to the Air Force Reserve Command's Tenth Air Force in peacetime, and becomes part of AFSOC at Hurlburt Field during conflict.

## Tri-County Economic Impact



Economic Impact	\$10.8 Billion
Total Defense Spending	\$4.3 Billion
Jobs	Over 93,200
Source: Florida Defense Fact Book January 2020	

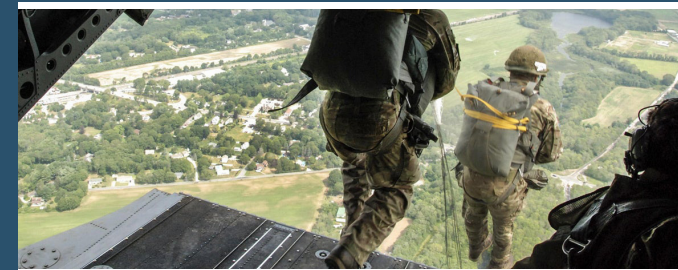
With seven military installations in Northwest Florida, the annual economic impact of the military presence in the region is over \$22 Billion, according to the 2020 Florida Defense Handbook.



## Eglin Gulf Test & Training Range

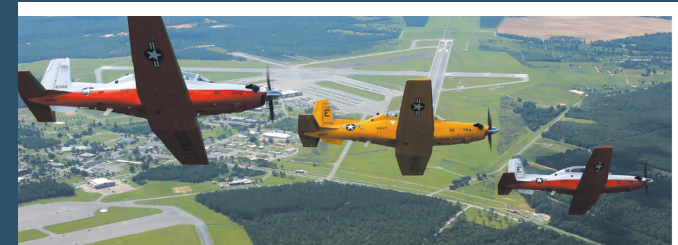
Live, virtual, and constructive environment to support training, testing exercising and experimentation.

## Camp Simons



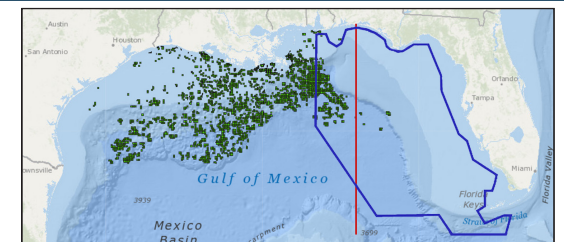
Camp Simons, the 7th Special Forces Group (Airborne) cantonment site, is located on Eglin's land range. The 7th SFG(A) consists of elite Army forces that are specially selected, trained, organized, and equipped to conduct special operations in support of theater and national objectives.

## Naval Air Station Whiting Field



NAS Whiting Field is home to Training Air Wing Five. The complex consists of two primary airfields and 13 Navy Outlying Landing Fields. NASWF trains Navy, Marine Corps, Coast Guard and international student aviators in the primary and intermediate phases of fixed wing aviation, and advanced training for helicopters. NASWF is the busiest Naval air complex in the world.

## Eglin Gulf Test & Training Range



BOEM Active Leases EGTTR Boundary Military Mission Line May 2020

Eglin manages the eastern Gulf Test & Training Range; the largest over-water military range in the nation. A national asset, the EGTTR is a unique resource offering tremendous capabilities for joint test and training exercises. Its expansive size allows for simultaneous maritime, air and land training activities.